

BBC

GET MORE FOR YOUR MONEY: 12-INCH SCOPES ON TEST



THE WORLD'S ONLY ASTRONOMY MAGAZINE AND CD PACKAGE

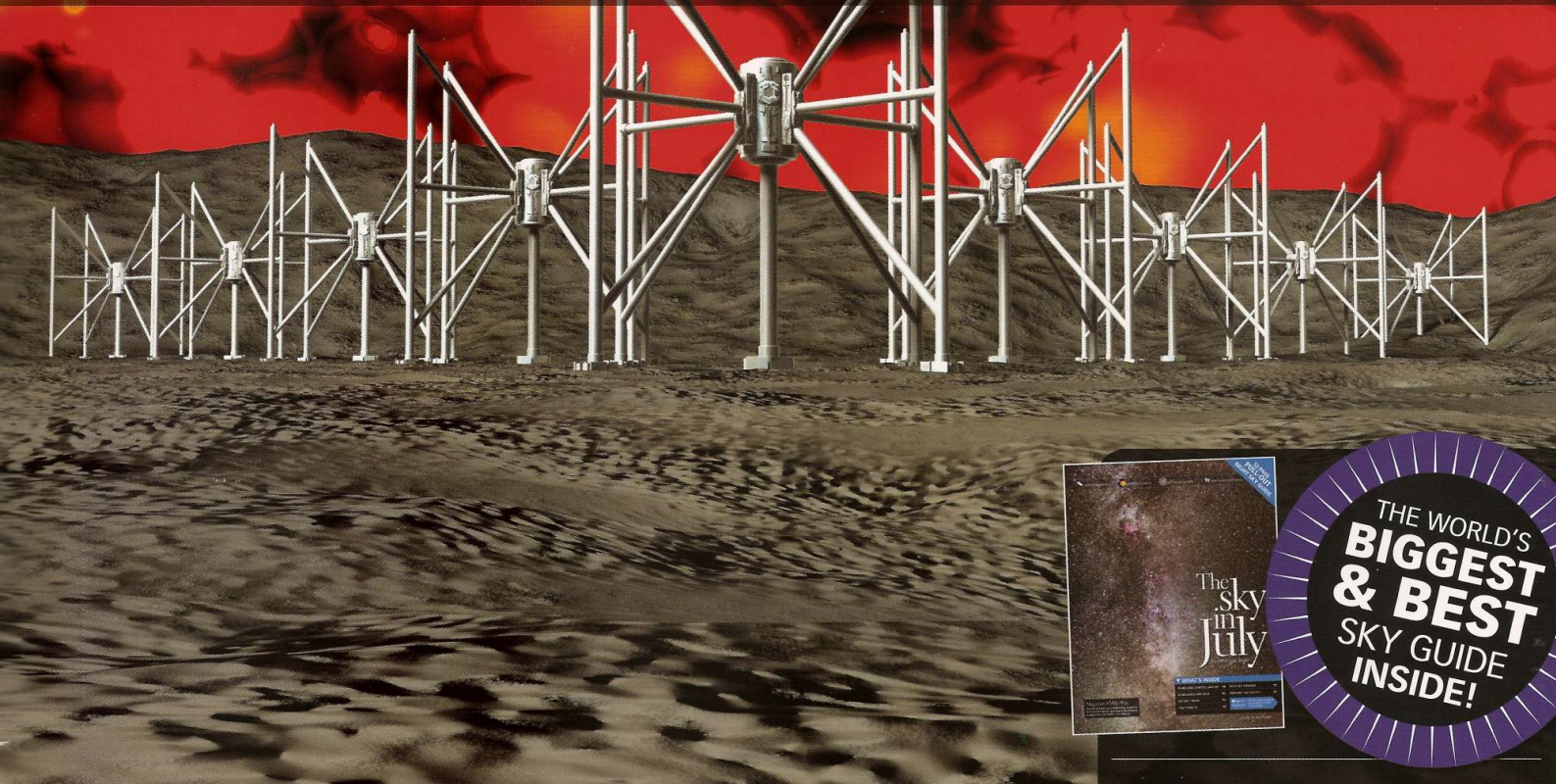
Sky at Night

JULY 2008 #38 > £4.25
www.skyatnightmagazine.com

Exploring the

COSMIC DARK AGES

How lunar telescopes will reveal the time before stars



THE WORLD'S
BIGGEST & BEST
SKY GUIDE
INSIDE!

How to look for
intelligent aliens



WIN! cameras
worth £1,000

Beginners' guide to
observing the Sun

PC & MAC CD-ROM CD38

WATCH MAY'S SKY AT NIGHT TV SHOW HERE

A STAR IS BORN

Watch Patrick Moore's earliest surviving TV appearance from 1957

CELESTIAL E-SPHERE

Get to know the skies with amazing 3D software from The Open University

ALSO ON YOUR COVERDISC

- ▶ WATCH MOVIES CAPTURING THE CONSTANT ACTIVITY ON OUR SUN
- ▶ SUPERNOVA SPECIAL: SEE STUNNING IMAGES OF EXPLODING STARS
- ▶ JOURNEY BACK TO THE BEGINNING OF TIME, THE BIG BANG, IN VIDEO

59 MIN MPEG VIDEO

Minimum spec: PC 500MHz processor, 128MB RAM, Windows 2000 or XP, 40x CD-ROM, QuickTime 6.5 or above. Mac G3 with 128MB RAM, OS X 10.2, 40x CD-ROM.

NO CD?

If this month's coverdisc is missing, please ask your newsagent for a replacement

9 771745 986003 07

WIN!

THE ULTIMATE PLANETARY, LUNAR AND SOLAR CAMERAS!

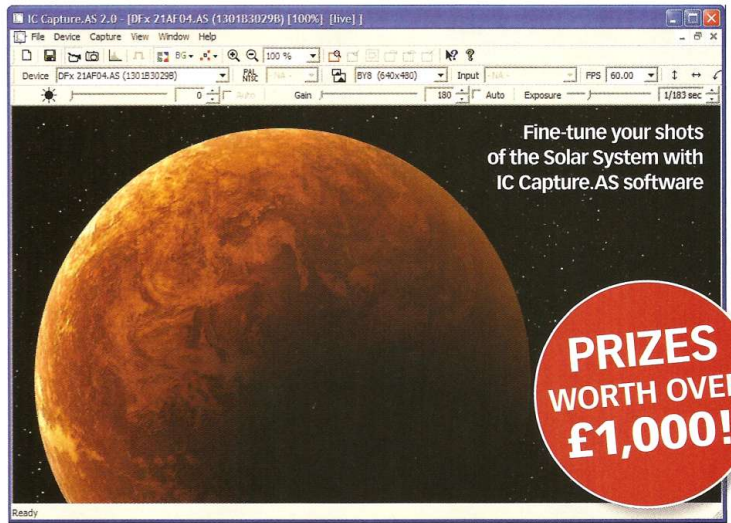
Have you ever dreamed of taking crisp, stunning shots of the rugged lunar surface, Saturn's rings or Jupiter's clouds through your telescope? Well, you could be doing just that within a few weeks. That's because this month we've teamed up with The Imaging Source to offer you the chance to win one of its next-generation USB 2.0 astronomy cameras, which are tailor-made for planetary imaging.

The star prize is a DMK 31AU03.AS monochrome camera, worth £458. It boasts a resolution of 1024x768 pixels, captures 30 frames per second and has a maximum exposure time of 60 minutes. The two runner-up prizes are DMK 21AU04.AS monochrome cameras worth £309. These capture 60 frames per second and have a resolution of 640x480 pixels. All the cameras have a low-noise Sony CCD chip and a USB 2.0 interface.

Each winner also receives a copy of the renowned camera

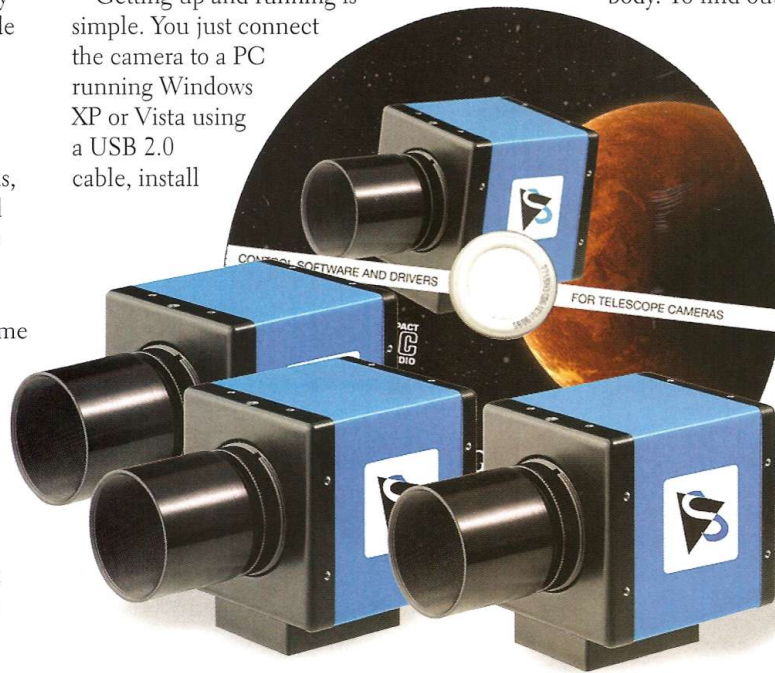
control software IC Capture.AS. This allows you to set camera parameters and save single images and image sequences. The resulting uncompressed AVI files can be loaded into RegiStax and other software, so that you can process your images until they're exactly what you had in mind.

Getting up and running is simple. You just connect the camera to a PC running Windows XP or Vista using a USB 2.0 cable, install



the included software, mount the camera on your telescope and point it at your favourite celestial body. To find out

more about The Imaging Source's USB 2.0 and FireWire astronomy cameras, see www.astronomycameras.com



ABOUT THE IMAGING SOURCE

The Imaging Source is a multi-national enterprise with branches in Charlotte (USA), Taipei (Taiwan) and Bremen (Germany). It has manufactured imaging products for scientific, industrial and medical applications for more than 20 years. In 2007, The Imaging Source used its years of experience in these fields to release a new line of cameras for amateur astronomers. The new astronomy cameras bring amateur astrophotographers highly affordable, robust and stable CCD imagers for use with their telescopes.

HOW TO ENTER...

To be in with a chance of winning, simply answer this question:

What is the light-capturing sensor in an astro-imaging camera called?

Don't forget to include your name, phone number and email address.

Send your answer to:

PECS DATA, BBC Sky at Night magazine camera competition, Midland House, 95a The Green, Darlaston, WS10 8JP

Or submit it online at:

www.skyatnightmagazine.com/competitions.asp

All entries must be received by 18 August 2008

Terms and conditions

Winners will be the senders of the first correct entries drawn at random after the closing date and will be notified by post, phone or email. The prize is as stated and no cash alternative will be offered. The competition is open to all readers, except employees of BBC Worldwide Ltd, the promoter and their agents. Only one entry per person. We do not accept entries made through third-party magazines or websites. All entrants are deemed to have accepted the rules and have agreed to be bound by them. For postal entries, write the title of the competition and your answer on a postcard to the above address. For online entries, visit www.skyatnightmagazine.com and click on the 'Competitions' link. BBC Worldwide Ltd may contact you with details of their products. Please write 'Do Not Contact' on your entry if you prefer not to receive such information. Write your email address on your postcard if you want to receive such information by email. We occasionally pass your details on to companies whose products and services we feel may be of interest to you. Please write 'No Other Companies' if you prefer not to receive such information.